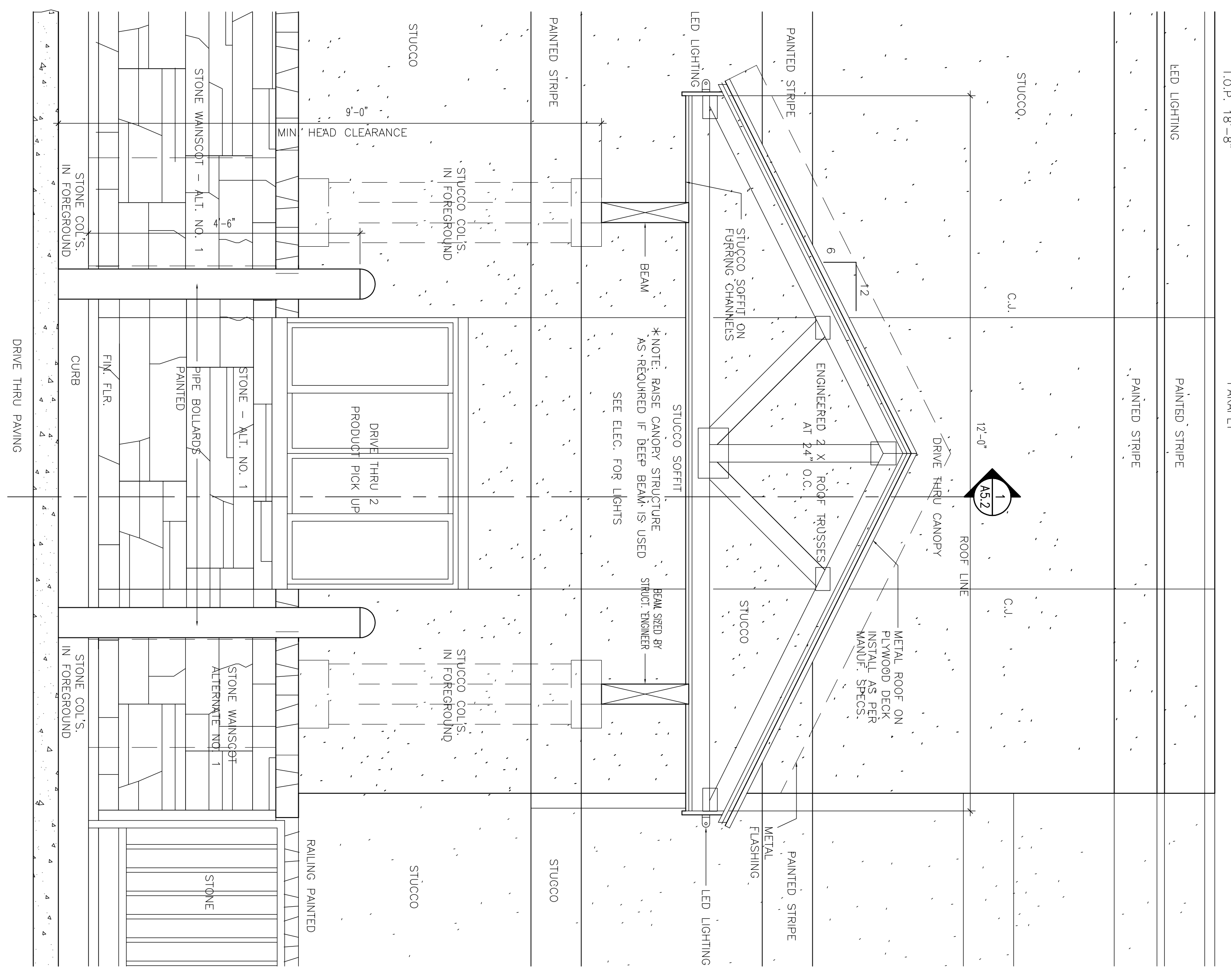
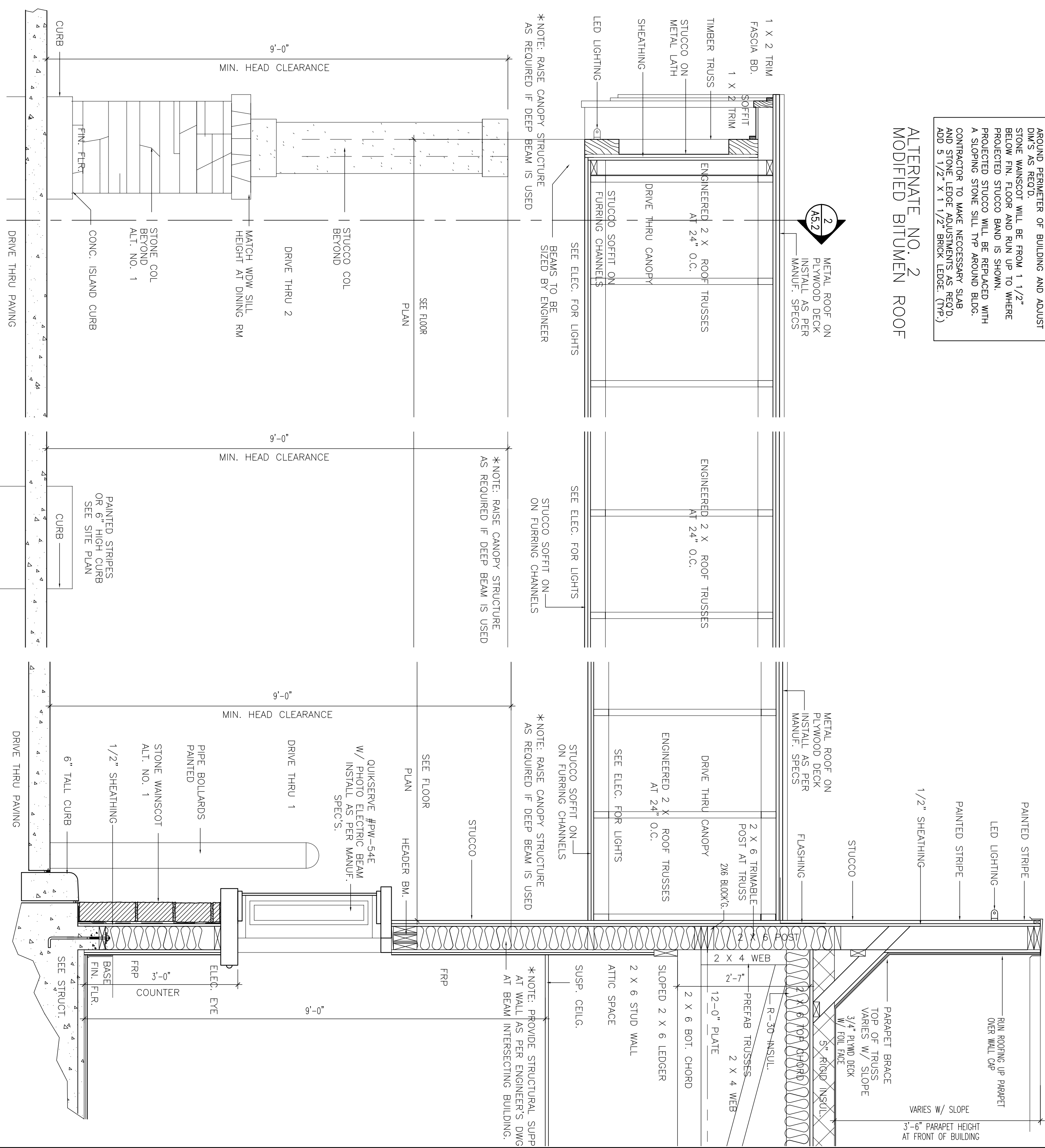


3 SECTION THRU LADDER & PARAPET
 A5.2 SCALE: 3/4" = 1'-0"



2 SECTION @ DRIVE THRU CANOPY TRUSSES
 A5.2 SCALE: 3/4" = 1'-0"



1 SECTION @ DRIVE THRU MDW & CANOPY
 A5.2 SCALE: 3/4" = 1'-0"

BASE BID STUCCO
 ALTERNATE NO. 1
 STONE WAINSCOT

NOTE: REFER TO COMPANIE WITH OWNER IF THERE WILL BE A STONE VENER WAINSCOT DRIVE THRU RECTOR OF BUILDING AND ADJUST STONE WAINSCOT WILL BE FROM 1 1/2" BELOW FIN FLOOR AND FINISH ON TOP WHERE PROJECTED STUCCO WILL BE REPLACED WITH A SLOPING STONE SILL TYP AROUND BLDG. CONTRACTOR TO MAKE NECESSARY SLAB AND 5 1/2" X 4" 1/2" BRICK LEAVE (TYP)

ALTERNATE NO. 2
 MODIFIED BITUMEN ROOF

NOTE:
 DRAWINGS 1, 2, 3, AND 4 ON THIS SHEET REFLECT ALTERNATE NO. 1 (STONE WAINSCOT) REFER TO 5/1/10 FOR TYPICAL CONDITION AT BASE BID. REFER TO DRAWINGS AS INDICATED ON SHEET A22 FOR WALL BASE AND CURB CONFIGURATIONS.