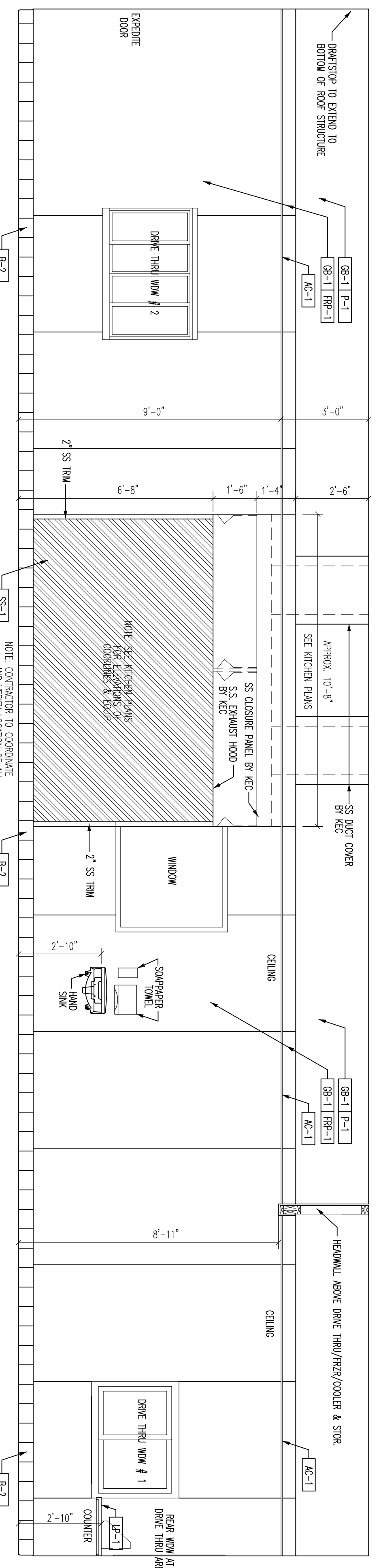
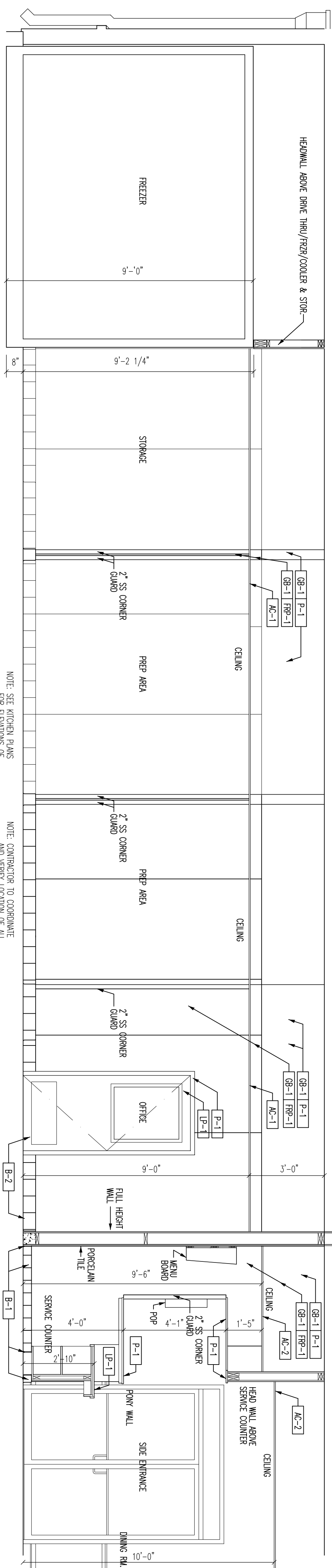


1 KITCHEN WALL BETWEEN KIT. & SERVICE COUNTER
 SCALE: 3/8" = 1'-0"

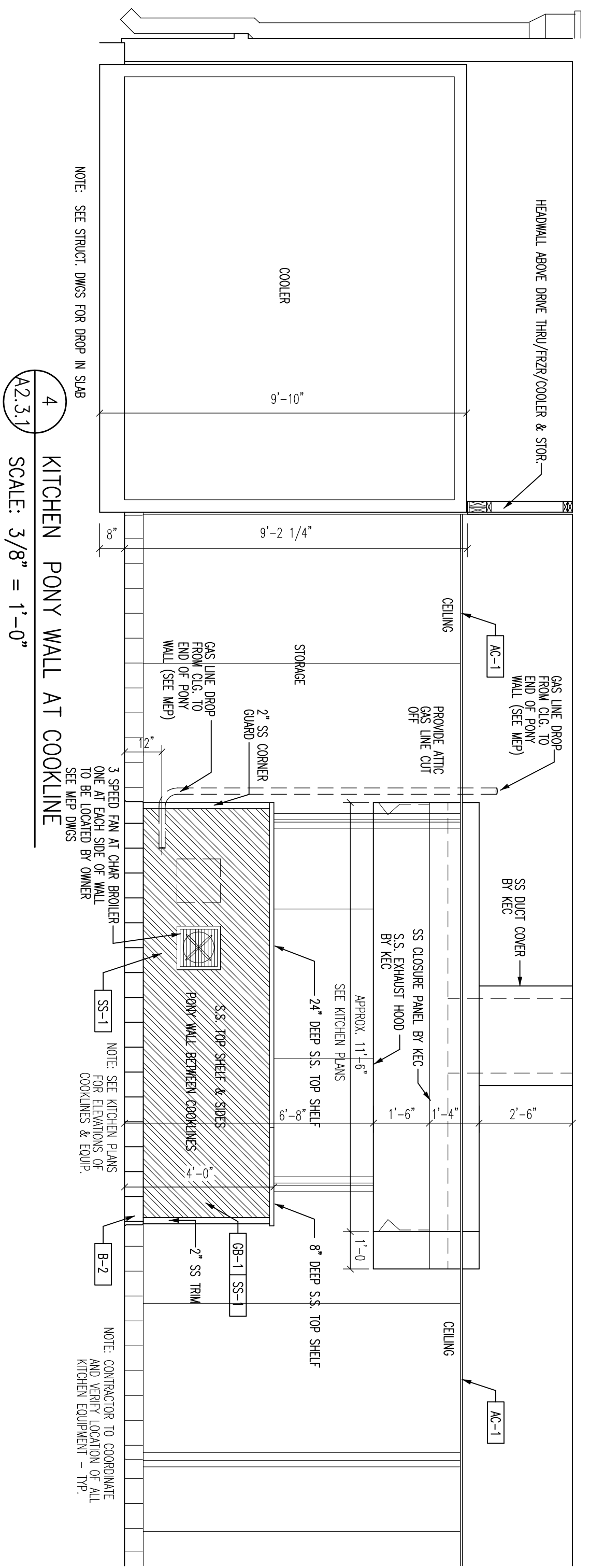


2 KITCHEN DRIVE THRU WALL AT FRYERS
 SCALE: 3/8" = 1'-0"

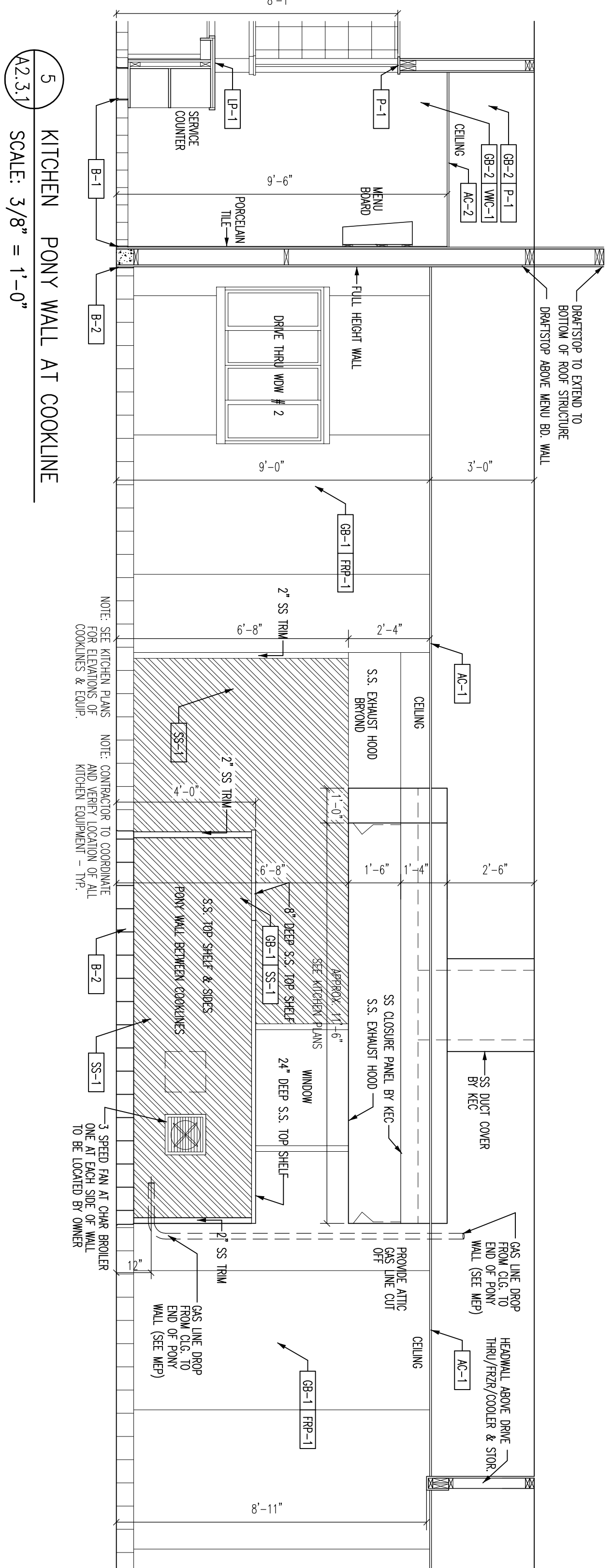
NOTE: REFER TO KITCHEN DRAWING SHEETS FOR ALL KITCHEN EQUIPMENT AND PROPER LOCATION. TYP.



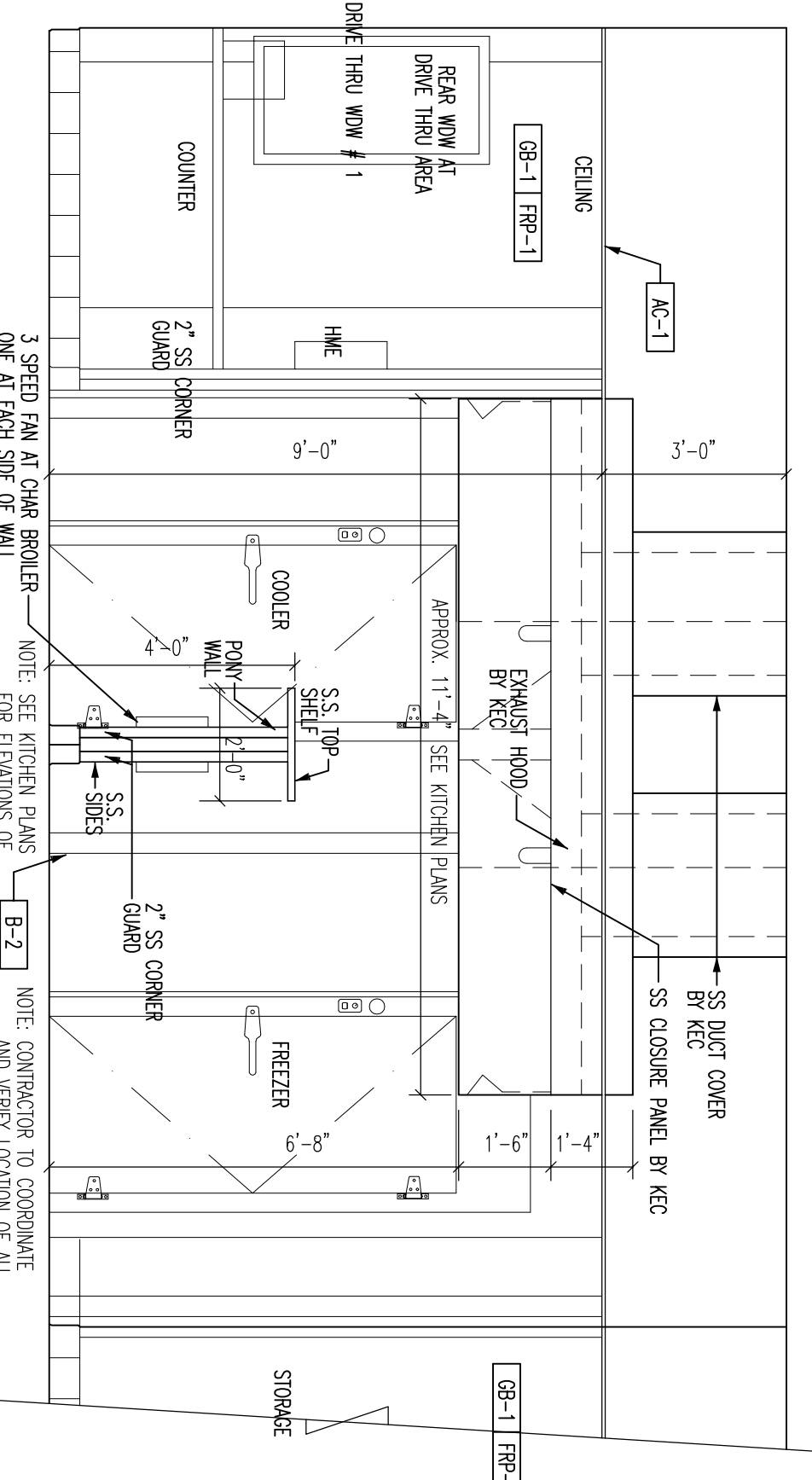
3 KITCHEN
 SCALE: 3/8" = 1'-0"



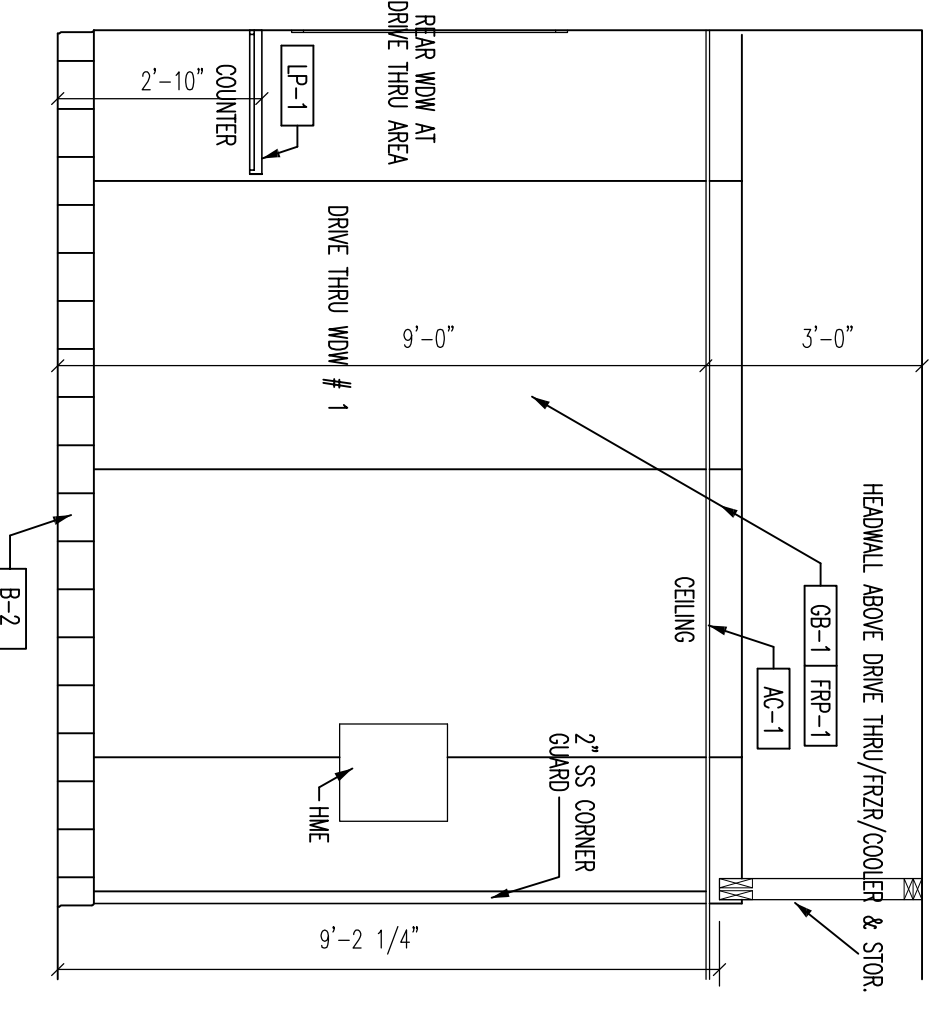
4 KITCHEN PONY WALL AT COOKLINE
 SCALE: 3/8" = 1'-0"



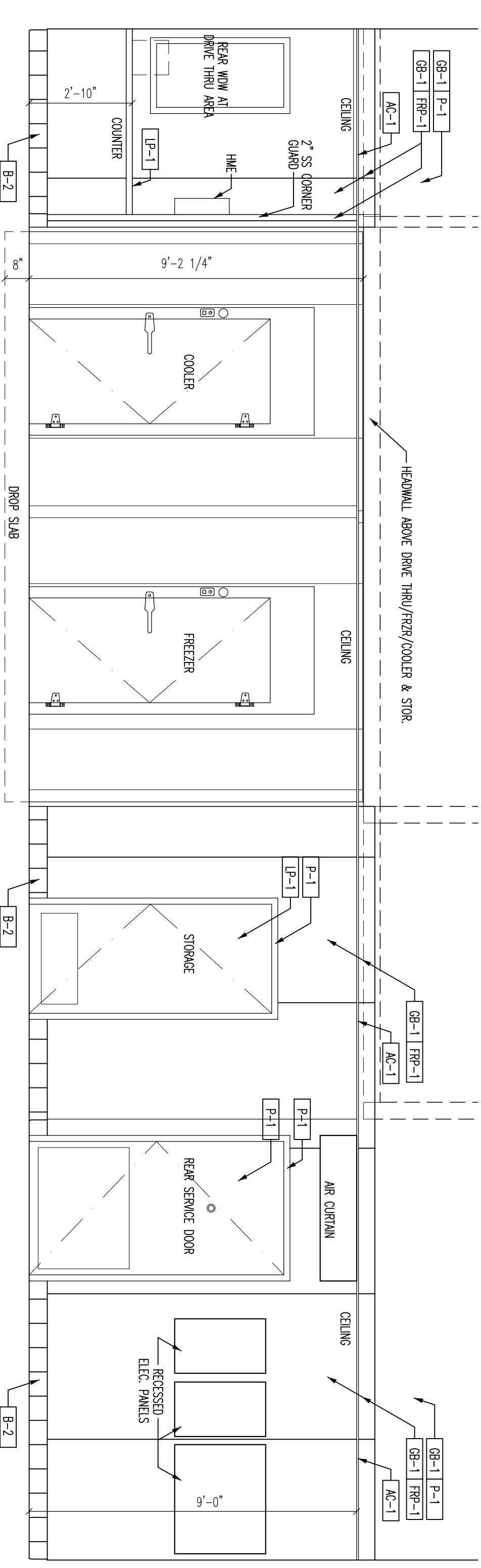
5 KITCHEN PONY WALL AT COOKLINE
 SCALE: 3/8" = 1'-0"



6 INTERIOR ELEVATION PONY WALL AT COOKLINE
 SCALE: 3/8" = 1'-0"



7 DRIVE THRU 1
 SCALE: 3/8" = 1'-0"



8 KITCHEN BACK WALL
 SCALE: 3/8" = 1'-0"

