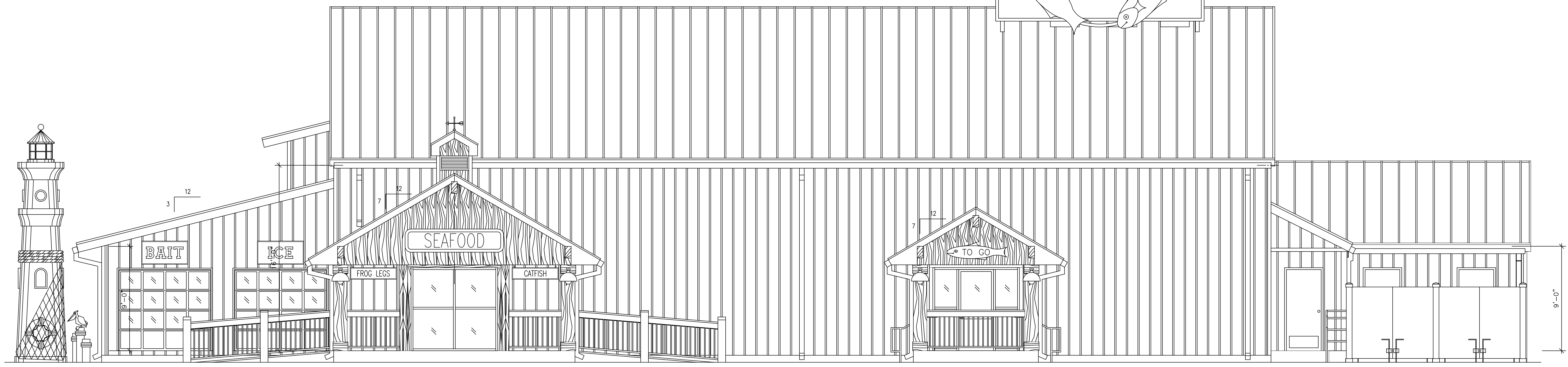
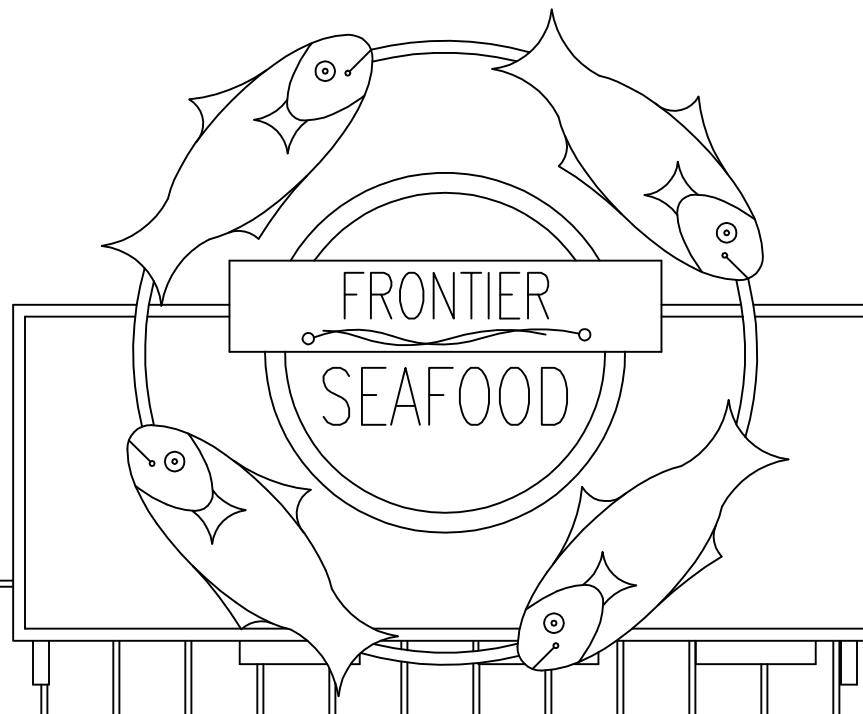


2 EXTERIOR ELEVATION  
A3.0R SCALE: 1/4"=1'-0"



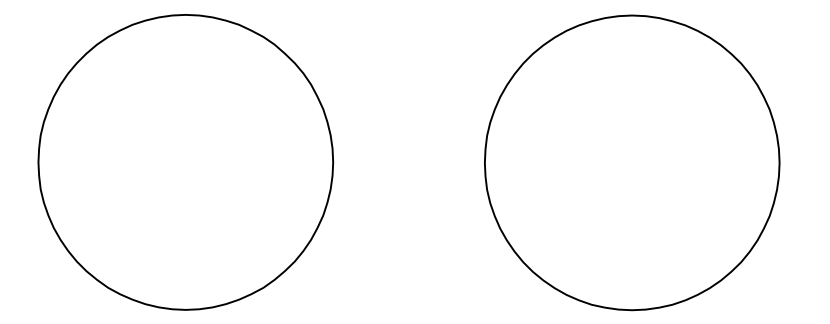
1 EXTERIOR ELEVATION  
A3.0R SCALE: 1/4"=1'-0"

REVISED STUDY - EXTERIOR ELEVATIONS

**DAILEY & SPEAR**  
ARCHITECTS, PLLC

CORPUS CHRISTI OFFICE:  
225 S. CARANCAHUA STREET  
CORPUS CHRISTI, TEXAS 78401  
(361)883-5588 (361)883-9204 FAX  
office@msa-architect.com

SAN ANTONIO OFFICE:  
25661 US HIGHWAY 281 N  
SAN ANTONIO, TEXAS 78258  
(830)980-7006 (830)438-7455 FAX  
lmdarcb@qvc.com



**FRONTIER SEAFOOD**  
FOR  
FRONTIER ENTERPRISES  
CULEBRA AND LOOP 1604 • SAN ANTONIO, TEXAS

COPYRIGHT 2011 ANY  
REPRODUCTION, POSSESSION, OR  
USE OF THESE PLANS OR ANY  
PART THEREOF WITHOUT THE  
WRITTEN PERMISSION OF DAILEY  
& SPEAR ARCHITECTS, PLLC IS  
PROHIBITED & WILL BE  
PROSECUTED TO THE FULL  
EXTENT OF THE LAW.

REVISION	DATE	BY
△	_____	_____
△	_____	_____
△	_____	_____
△	_____	_____

DATE:  
FEBRUARY 2011

PROJECT NO.  
80813R

DRAWING TITLE  
**EXTERIOR ELEVATIONS**

DRAWING NUMBER:  
**A3.0R**  
Sheet \_\_\_ of \_\_\_

1/2"=1'-0" (1/4"=1'-0")  
 3/4"=1'-0" (1/2"=1'-0")  
 1"=1'-0" (3/4"=1'-0")  
 1 1/4"=1'-0" (1"=1'-0")  
 1 1/2"=1'-0" (1 1/4"=1'-0")  
 1 3/4"=1'-0" (1 1/2"=1'-0")  
 2"=1'-0" (1 3/4"=1'-0")  
 2 1/4"=1'-0" (2"=1'-0")  
 2 1/2"=1'-0" (2 1/4"=1'-0")  
 2 3/4"=1'-0" (2 1/2"=1'-0")  
 3"=1'-0" (2 3/4"=1'-0")  
 3 1/4"=1'-0" (3"=1'-0")  
 3 1/2"=1'-0" (3 1/4"=1'-0")  
 3 3/4"=1'-0" (3 1/2"=1'-0")  
 4"=1'-0" (3 3/4"=1'-0")  
 4 1/4"=1'-0" (4"=1'-0")  
 4 1/2"=1'-0" (4 1/4"=1'-0")  
 4 3/4"=1'-0" (4 1/2"=1'-0")  
 5"=1'-0" (4 3/4"=1'-0")  
 5 1/4"=1'-0" (5"=1'-0")  
 5 1/2"=1'-0" (5 1/4"=1'-0")  
 5 3/4"=1'-0" (5 1/2"=1'-0")  
 6"=1'-0" (5 3/4"=1'-0")  
 6 1/4"=1'-0" (6"=1'-0")  
 6 1/2"=1'-0" (6 1/4"=1'-0")  
 6 3/4"=1'-0" (6 1/2"=1'-0")  
 7"=1'-0" (6 3/4"=1'-0")  
 7 1/4"=1'-0" (7"=1'-0")  
 7 1/2"=1'-0" (7 1/4"=1'-0")  
 7 3/4"=1'-0" (7 1/2"=1'-0")  
 8"=1'-0" (7 3/4"=1'-0")  
 8 1/4"=1'-0" (8"=1'-0")  
 8 1/2"=1'-0" (8 1/4"=1'-0")  
 8 3/4"=1'-0" (8 1/2"=1'-0")  
 9"=1'-0" (8 3/4"=1'-0")  
 9 1/4"=1'-0" (9"=1'-0")  
 9 1/2"=1'-0" (9 1/4"=1'-0")  
 9 3/4"=1'-0" (9 1/2"=1'-0")  
 10"=1'-0" (9 3/4"=1'-0")  
 10 1/4"=1'-0" (10"=1'-0")  
 10 1/2"=1'-0" (10 1/4"=1'-0")  
 10 3/4"=1'-0" (10 1/2"=1'-0")  
 11"=1'-0" (10 3/4"=1'-0")  
 11 1/4"=1'-0" (11"=1'-0")  
 11 1/2"=1'-0" (11 1/4"=1'-0")  
 11 3/4"=1'-0" (11 1/2"=1'-0")  
 12"=1'-0" (11 3/4"=1'-0")